

CT DEEP **2016**
FISHING REPORT NUMBER 30
11/3/2016



Walleye
(*Sander vitreus*)



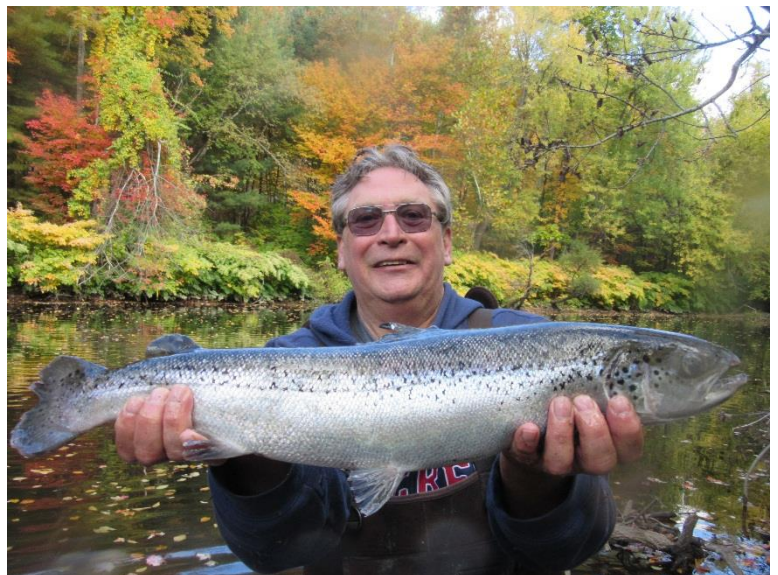
YOU CAN FIND US DIRECTLY ON FACEBOOK. This page features a variety of information on fishing, hunting, and wildlife watching in Connecticut. The address is www.facebook.com/CTFishandWildlife.



INLAND REPORT

BROODSTOCK ATLANTIC SALMON. A number of catches reported from the recently stocked areas on the Naugatuck, Shetucket River, and Mount Tom Pond (with some time and effort put forth).

Salmon stocking recap. Two weeks ago 275 broodstock Atlantic Salmon were stocked into the **Shetucket River** Broodstock Area on Tuesday, 10/18, and 270 broodstock Atlantic Salmon were stocked into the **Naugatuck River** (135 fish in the upper broodstock area and 135 fish into the lower broodstock area) on Friday, 10/21. In addition, 500 fish were stocked into Mount Tom Pond and 500 fish into Crystal Lake (Ellington) four weeks ago. These salmon are 2-6 lb fish. Additional fish will become available from the Kensington State Fish Hatchery in November, including some in the 6-20 lb range. *See page 3 for a summary of Atlantic salmon fishing regulations.*



LARGEMOUTH BASS fishing is reported as fair with fall turnover occurring in some waterbodies. Target suspended fish over deeper water using jigs (1 oz.). Also, the outside edges of weed lines are holding some bigger fish. Places to try include Amos Lake, Bantam Lake, Gardner Lake, Pattagansett Lake, Crystal Lake, Mudge Pond, and Pachaug Pond. **Tournament angler reports** are from Candlewood Lake (slow), Highland Lake (slow to fair, 4.08 lb lunker) and Winchester Lake (very slow).

SMALLMOUTH BASS action reported at Candlewood Lake (although it's been tough here for many lately), Mashapaug Lake and Squantz Pond. **Tournament angler reports** are from Candlewood Lake (tough for most anglers, good for a few, with a 5.12 lb lunker),

NORTHERN PIKE The fall Pike bite is slowly picking up with Pike sharpies reporting medium-sized minnows and daredevils working along the edges of weedlines. Places to try include Bantam Lake, Lake Lillinonah, Mansfield Hollow Reservoir, Quaddick Reservoir, Pachaug Pond, Hopeville Pond, Winchester Lake and the Connecticut River.

WALLEYE- The annual stocking of fingerlings (about 5-7 inches) were stocked on 10/31/2016. It will take a few years for these fish to reach our legal size of 18". Fish are biting in Squantz Pond, Batterson Park Pond,

and Beach Pond. Look for deep drop offs and structure. Other places to try for Walleye are Mashapaug Lake, Gardner Lake, Mount Tom Pond, Lake Saltonstall, West Thompson Reservoir, and the Saugatuck Reservoir. Please note that Lake Zoar will be drawn down from 10/28 through 11/6.

BLACK CRAPPIE fishing continues to pick up, good reports for crappie from a number of areas, including Candlewood Lake, Lake Lillinonah, Rainbow Reservoir, Rogers Lake, Roseland Lake, and Park Pond.

TROUT- RIVERS & STREAMS – Temperatures are dropping, but the lack of significant rain continues to keep many streams at or near record low flow levels (see stream flow graphic on page 3).

Farmington River – Fishing continues to be good and the conditions for this weekend should be good. Flows are clear and very low, currently 57 CFS at Riverton with the Still River adding 32 CFS, and water temperatures are in the low 50's°F.

Hatches/patterns include Isonychia (#12-14, parachute style), Blue Wing Olives (#18, 22-24, mid-late afternoon), Caddis (tan #16-18, all day; brown #16-18), Midges (#20-32, morning), and Rusty Spinner (#14-20, mornings). White Wooly Buggers, Muddlers, Micky Finn, or Grey or Black Ghosts (#4-10) are standard streamers. Bottom bouncing nymphs with Caddis pupa (#14-16), Serendipity (#14-16), Prince (#6-18) and Hare's ear (#8-20) works well.

Housatonic River – Conditions for the weekend should be good, with 1,200 Rainbow Trout (12 + inch fish) stocked last week (10/26) and good weather forecast and recently improved flows. The river had been very low (near record low levels at times) but last week's rain provided a nice jumpstart (currently 332 CFS at Falls Village and 371 CFS at Gaylordsville).. Morning water temperatures are currently in the mid 40's °F.

Patterns to try include Blue Wing Olive (#18-22, early morning; spinner fall in evening), *Isonychia* (#10-12 evening), Midges (#20-26) and Brown/tan caddis (#14-18, early morning & evening), Flying Ants (#14-18), Black and Cinnamon Ants (#16-18, midday, when breezy) and large streamers. Try nymphing the pockets, deeper riffles and pool heads.

TROUT-LAKES & PONDS – Fishing for surplus broodstock Brook Trout has been reported as very good in Tyler Lake, Mohawk Pond, and Black Pond (Woodstock). Some tackle to try includes spinners, streamers, and small to medium Rapala.

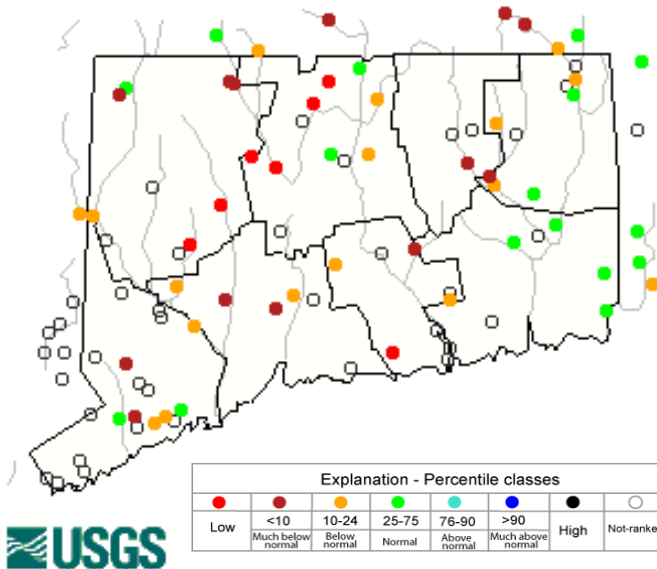
CONNECTICUT RIVER

Flows have increased some but still remain below typical late October levels (many places remain difficult to access by boat to fish). **SMALLMOUTH BASS** have been spotty from Hartford upstream, but a number of good reports from the mainstem from Hartford down to Haddam. **LARGEMOUTH BASS** fishing has been on the slow side in the Hartford to Haddam area. **NORTHERN PIKE** are slowing finding the end your line, especially with medium shiners. **BLACK CRAPPIE** action is improving in the coves up and down the river. Target the backwaters with small shiners, silver grubs, or small Rapalas. **CARP** continue to provide some action in the coves and in the main stem (Hartford to Middletown area).

FISHING SEASONS. Anglers are reminded that the fishing season at several lakes and ponds scattered throughout the state closed on Monday, October 31st, most notably **LAKE WONOSKOPOMUC, GREEN FALLS RESERVOIR** and **SHENIPSIT RESERVOIR**. Please refer to the 2016 CT Angler's Guide for additional locations.

Stream flow

Thursday, November 03, 2016 16:30ET



Data in the state graphic to the left are generated by the United States Geologic Survey (USGS) and are available on line at: <http://waterdata.usgs.gov/ct/nwis/rt>

A percentile is a value on a scale of one hundred that indicates the percent of data in the data set equal to or below it. For example streamflow greater than the 75th percentile means only ¼ of the streamflow values were above the value and thus would be considered “above normal”. Stream flow between the 25th and 50th are considered to be “normal flows” and those 25th or less are considered to be “below normal”.

Atlantic salmon fishing regulations and areas summary

- **Regulations for Atlantic salmon on the Shetucket and Naugatuck Rivers.** In the Naugatuck, Housatonic and Shetucket Rivers, from September 1 through November 30, angling for Atlantic salmon is restricted to **catch-and-release only**. From December 1, 2016, through March 31, 2017, the daily creel limit for Atlantic salmon will be one. During the open season in the rivers, the legal method for taking Atlantic salmon is limited to angling using a single fly, or an artificial lure with a single free swinging hook and no additional weight can be added to the line above the fly or lure. Also, from October 1st through March 31st, fishing for other species in the designated Atlantic Salmon “Broodstock Areas” is restricted to the gear legal for Atlantic salmon.
- On the **Shetucket River**, anglers can fish for salmon downstream from the Scotland Dam (Windham) to the Water Street Bridge in Norwich (the first bridge upstream of Norwich Harbor). The salmon are stocked into one designated Atlantic Salmon “Broodstock Area”, from the Scotland Dam to the Occum Dam.
- Anglers are allowed to fish for salmon in the **Naugatuck River** from the confluence of the East and West Branches (Torrington) downstream to the Housatonic River (Derby). Anglers may also fish for Atlantic salmon in the Housatonic River downstream of Derby Dam. The salmon are typically stocked into two designated Atlantic Salmon Broodstock Areas on the Naugatuck River, the “Campville Section” of the upper Naugatuck River from Route 118 downstream to the Thomaston Flood Control Dam (Litchfield-Thomaston) and the “Beacon Falls Section” of the lower Naugatuck, from Prospect Street (Naugatuck) downstream to Pines Bridge Road (Route 42 bridge, Beacon Falls). From October 1st through March 31st, fishing for other species in these designated Atlantic Salmon Broodstock Areas is restricted to the gear legal for Atlantic salmon.
- The regulations for Atlantic salmon released into lakes and ponds are different from the regulations for salmon on the Naugatuck and Shetucket Rivers. **In each lake, the regulations for methods, seasons and minimum lengths for salmon will be the same as for trout in that specific water body but the daily creel limit will be one salmon per day.** (Please refer to the 2016 CT Angler’s Guide for trout regulations).

NOTES & NOTICES:

BASHAN LAKE (drawdown). Bashan Lake remains down approximately 4-5 feet following dam repairs completed in 2015 due to ongoing lack of sufficient precipitation (refill rate is dependent on rainfall amounts) and the state boat launch remains closed.

BRANFORD RIVER (boat launch). The Branford River state boat launch is currently closed for renovations. This closure is currently expected to last to November 14, 2016. Alternative nearby launch sites include the Guilford Town boat launch and the East River State boat launch, both in Guilford.

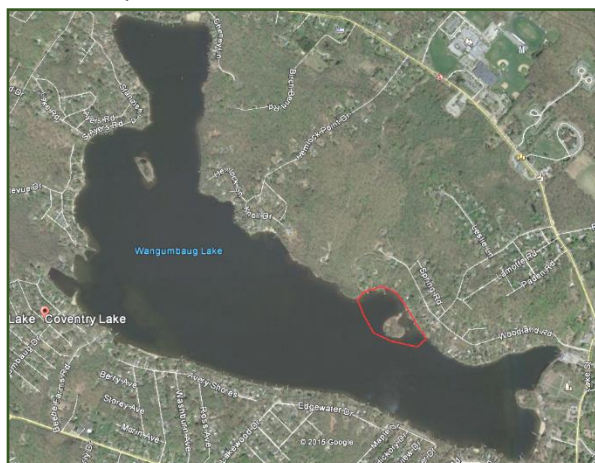
CANDLEWOOD LAKE (lake levels). Due to the drought, the lake level is down below typical late October levels and the launching of trailered boats (especially larger boats) is difficult at the Lattins Cove state launch. **The Squantz Cove state launch remains fully functional.**

COLEBROOK RIVER LAKE (boat launch). Due to low water levels the **regular boat launch at Colebrook River Lake is closed**, however, an alternate location to launch from is available and can be used. Boaters should use extra care when launching and when out on the lake (remember that submerged objects such as tree stumps and rocks are much closer to the surface due to water levels). Boaters can call the U.S. Army Corps of Engineers (USACE) at 860-379-8234 for updated information.

CONNECTICUT RIVER (invasive species alert). Hydrilla was recently found in the main stem Connecticut River in Glastonbury (near Glastonbury's riverfront Park & Boathouse). See the Coventry Lake entry below for what river users should do to prevent spread of this invasive plant to other waterbodies.

COVENTRY LAKE (invasive species alert). Hydrilla, a very highly invasive aquatic plant, has been found growing in Coventry Lake. All lake users should take extra care to check and clean their boats (including canoes, kayaks and rowing sculls), trailers, and fishing equipment before leaving the boat launch, or leaving the lakeshore.

Coventry Lake (Wangumbaug Lake) boaters should avoid the area outlined in red to avoid fragmenting and spreading hydrilla. This is only area in the lake where hydrilla has been found.



DOOLEY POND (lake levels). Due to dry conditions, the pond has not refilled yet following a drawdown to facilitate dam repairs is ongoing (repairs are done, but refill rate is dependent on rainfall). The state boat launch is currently closed.

GLASGO POND (drawdown). A drawdown of Glasgo Pond to facilitate dam repairs is ongoing (began September 2015). Launching of boats is difficult to impossible.

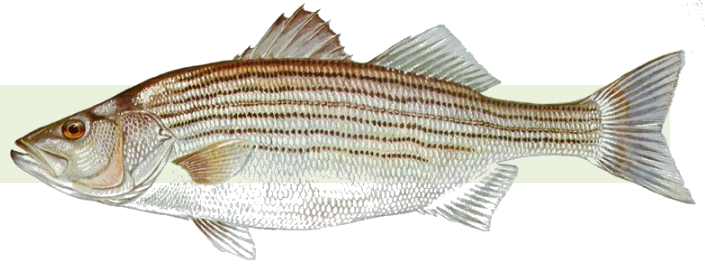
HANOVER POND (drawdown). A 6-foot drawdown of Hannover Pond (Quinnipiac River, Meriden) began on September 13 for the purposes of installing a small hydropower facility. The drawdown is likely to extend through the upcoming winter months. This pond has extensive shallow areas that are now exposed. **LAKE ZOAR** is currently drawn down with refill scheduled to begin late on November 6. Launching of trailered boats from the state boat launch may be difficult during the drawdown. **LAKE LILLINONAH** is scheduled for a drawdown from November 7 to November 16,

WINTER DRAWDOWNS. In western the drawdown of **Highland Lake** started this week. In eastern CT, drawdowns of **Middle Bolton Lake** (1.5 feet), **Lower Bolton Lake** (1.5 feet), **Gardner Lake** (3 feet),

Mashapaug Lake (1.5 feet) and **Wyassup Lake** (3 feet) have begun. A 3 foot drawdown of **Pachaug Pond** is ongoing.

FISHING SEASONS. Anglers are reminded that the fishing season at several lakes and ponds scattered throughout the state closed on Monday, October 31st, most notably **LAKE WONOSKOPOMUC**, **GREEN FALLS RESERVOIR** and **SHENIPSIT RESERVOIR**. Please refer to the 2016 CT Angler's Guide for additional locations.

MARINE FISHING REPORT



Surface water temperatures in Long Island Sound (LIS) are in the upper 50's to low 60's °F. Check out the following web sites for more detailed water temperatures and marine boating conditions:

<http://www.mysound.uconn.edu/stationstat.html>

http://marine.rutgers.edu/mrs/sat_data/?nothumbs=1

<http://www.ndbc.noaa.gov/>

<http://www.wunderground.com/MAR/AN/330.html>

NEW SHARK REGULATIONS – EFFECTIVE MONDAY, AUGUST 22, 2016: An Atlantic Highly Migratory Species (HMS) permit is required to take, possess, or land any shark species, other than smooth or spiny dogfish, in this state.

To obtain an **HMS permit** visit: <http://www.greateratlantic.fisheries.noaa.gov/aps/permits/> or call NMFS Customer Service Center at (888) 872-8862. CT Marine anglers may encounter Sand Tiger and Sandbar (Brown) Shark which are protected and prohibited species and they must be released unharmed. **IF YOU DON'T KNOW, PLEASE LET IT GO!** [Coastal shark information](#).

Connecticut State Boundary Line in Long Island Sound. Anglers please note: Though Connecticut has reciprocity with neighboring states (New York, Rhode Island, Maine and Massachusetts), residents of Connecticut are required to have a CT Resident Marine Waters Sport Fishing License to fish in the Marine District.

WHALES AND SEALS - see check [WHALE WATCHING GUIDELINES](#). All marine mammals are protected by the Federal Marine Mammal Protection Act. Following these recommended operational guidelines helps minimize chances of harassing or injuring whales and violating Federal law. Guidelines apply to all large

whales from Maine through Virginia, except North Atlantic right whales. It is illegal to approach a right whale within 500 yards (1500 feet) unless granted specific exemption or authorization.

TAUTOG (Blackfish) fishing is very good (Rapid Rock, Race Rock, Sarah's Ledge, inner Bartlett Reef, Two Tree Island (flood tide), various smaller locations east to Watch Hill. You may want to try rock piles or reefs that are away from the more popular areas to increase your chances of finding a keeper sized fish. Green, Asian or Hermit Crabs will work, especially on jigs. Consider putting the crab (bait) on a chartreuse and orange jig (1.5 – 3.0 ounces in weight/depending on tide and wind). The lighter the jig the better...feel more bites. Use braid in 30-50 lb class and/or a 50 lb fluorocarbon leader (sensitivity to feel the bites is important). Also use a 4/O Gamakatsu hook (Octopus style) when using bait.

STRIPED BASS fishing is excellent. The Housatonic River is red hot, CT River up to Wethersfield Cove and the upper Thames River (north of Montville). Fish have been migrating into the estuaries and tidal rivers but the reefs in Long Island sound are still producing fish. There is still plenty of Atlantic menhaden (bunker) around that can be used as bait. Live bunker on a three-way or slider rig on the local reefs and rip areas can still provide some results. Other striper spots include the lower Mystic and Thames River, the Race, Sluiceway, Plum Gut, Pigeon Rip, outer Bartlett Reef, Black Point, the "humps" south of Hatchett Reef, lower Connecticut River (Dock & Dine shore fishing access), Long Sand Shoal, Cornfield Point, Southwest Reef (outer), Sixmile Reef, Falkner Island area, the reefs off Branford, New Haven Harbor (Breakwalls) and the upper reaches, Charles Island area, lower Housatonic River, buoys 18 and 20 off Stratford Point, Stratford Shoal/Middle Ground, Milford Point, Penfield Reef, around the Norwalk Islands, and Cable and Anchor Reef.

STRIPED BASS ANGLERS FISHING IN RHODE ISLAND WATERS - are advised that the state of Rhode Island has adopted the following regulations pertaining to striped bass. These regulations apply to all Rhode Island state lands and waters including the waters around Block Island: **"Any person recreationally harvesting a striped bass thirty-four (34) inches or larger shall at the time of harvest have the right pectoral fin removed at a point as close to the body of the fish as possible."**

BLUEFISH fishing is still good. If you are looking for these "choppers" now's the time before it's too late. They can be found throughout the Sound (find the birds). Bluefish fishing spots include the reefs off Watch Hill, the Race, Thames River, Sluiceway, Plum Gut, Pigeon Rip, lower Connecticut River, CT DEEP Headquarters, Long Sand Shoal, Sixmile Reef, Falkner Island area, New Haven Harbor and upper reaches, lower Housatonic River, buoys 18 and 20 off Stratford Point, Stratford Shoal/Middleground, Penfield Reef, Norwalk Islands and Cable and Anchor Reef.

ATLANTIC BONITO & LITTLE TUNNY fishing is good. "They are everywhere" said an eastern charter boat captain. You can find large schools from Millstone Point to Race Rock and the western shore of Fishers Island. Water temperatures are slowly starting to drop, but there are still hanging around. Dawn and dusk is typically the best time to fish for these inshore tunas but they can be caught during the daytime. A quiet approach and finding birds (gulls/terns) actively feeding is the key to a successful trip

.BLACK SEA BASS fishing continues to be excellent on all the major reefs and wrecks throughout Long Island Sound. When releasing fish suffering from "barotrauma", a buildup of swim bladder gases, try using a recompression tool to help get them back to the bottom quickly. More information is available at FishSmart.org.

SCUP (porgy) fishing has started to slow down as fish start their migration to offshore overwintering grounds. Some scup can still be caught on the local reefs or from shore. Locate your favorite Enhanced Shore Fishing Opportunities for these hard fighting and excellent eating "Reef Slammers".

HICKORY SHAD fishing has picked up from last week for some fun fall shore fishing action. Your best chances are in the lower Connecticut River (DEEP Marine Headquarters fishing pier), East and West River, Lieutenant River, and Black Hall River.

GOT A FISHING REPORT - PLEASE EMAIL US AT deep.marine.fisheries@ct.gov

NOTABLE CATCHES:

Species	Length (in.)	Weight (lb)	Angler
Striped Bass (C&R)	46"	--	Richard Willette
Black Sea Bass	21"	4 lbs. 2 oz.	Dean Vogel

For Current Connecticut Recreational Fishing Regulations: Anglers should consult the 2016 Connecticut Anglers Guide which is now available at most Town Clerks Offices, DEEP offices and at tackle stores selling fishing licenses. Current regulations, electronic versions of the Angler's Guide and additional information can all be accessed on the DEEP website at: www.ct.gov/deep/fishing.

The Connecticut Department of Energy and Environmental Protection is an Affirmative Action/Equal Opportunity Employer that is committed to complying with the requirements of the Americans with Disabilities Act. Please contact us at (860) 418-5910 or deep.accommodations@ct.gov if you have a disability and need a communication aid or service; have limited proficiency in English and may need information in another language; or if you wish to file an ADA or Title VI discrimination complaint.

DEEP WEEKLY Fishing Report



**Connecticut Department of
ENERGY & ENVIRONMENTAL PROTECTION**

79 Elm Street, Hartford, CT 06106
www.ct.gov/deep

Striped Bass images courtesy Duane Raver/USFWS.